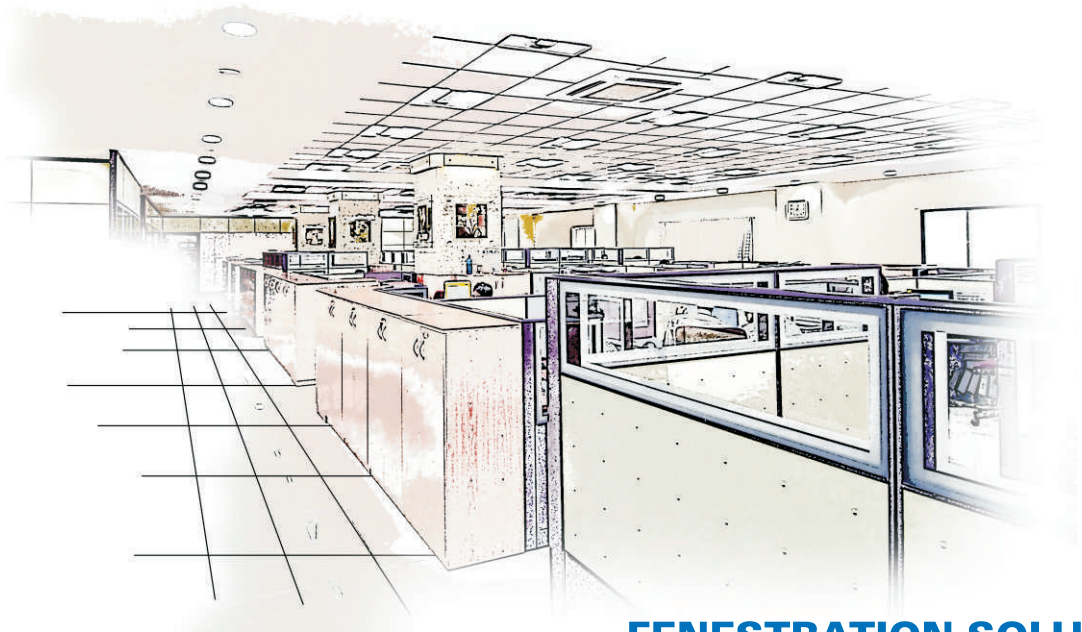


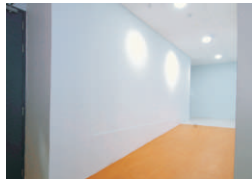
Turnkey Interior Solutions
(Commercial & Industrial)



FENESTRATION SOLUTIONS



FALSE
CEILINGS



PARTITIONS,
DRY WALL
CONSTRUCTION



ACCESS
FLOORS



MODULAR FURNITURE
&
TURNKEY INTERIORS



FENESTRATION
DOOR / WINDOWS /
FRAMES

Range of Fenestration Products:

Door Frames:

PVC Door Frames – Long lasting, useful for heat and sound insulation.

Steel Door Frames – Made from pressed, hot dipped GI steel.

Concrete – Economical, durable, high strength and smooth finished RCC door frames

Door Shutters:

Moulded Doors – Solid core, hot pressed, P/F bonded with imported moulded HDF skin.

PVC Doors – Solid foam with integral skin, sturdy, fire retardant, light weight, heat and sound insulated.

FRP Doors – PUF filled door panels.

Hormann Doors – A wide variety of Industrial doors (High speed and Sectional), shutters and grills made to European standards.

Industrial and Steel Doors – strong, dimensionally stable available for a variety of end applications.

Windows:

uPVC Windows – Fenesta make windows for thermal and sound insulation.

Aluminium windows – Made with special sections for long and uninterrupted usage.



Rolling Shutters



Sectional Doors



uPVC Windows & Door Systems



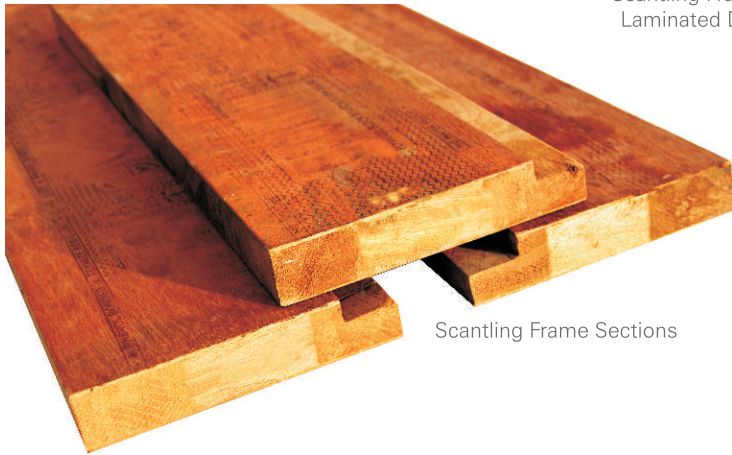
Sliding, Casement, Tilt & Turn, French Windows & Doors



PVC Panel Doors & Frames

nuCON Door Frames & Scantlings

- Solid core, hot pressed, P/F bonded, water proof door frame scantling.
- Seasoned & chemically treated, easy for installation & fitting after plaster work.
- Available in commercial face, veneered, laminated & resin coated surface finishes, various thickness (40/45/50MM) & wall widths and can be painted/polished.

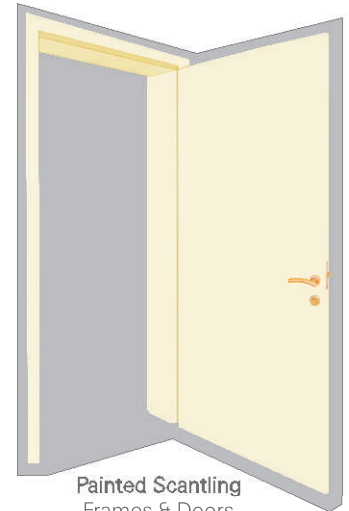


Scantling Frame Sections

Scantling Frames & Laminated Doors

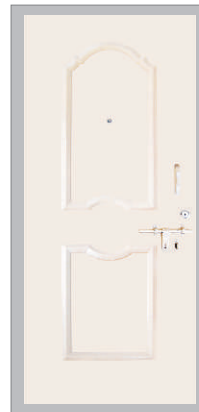
Flush Doors

- Factory made, Solid core, Seasoned & chemically treated hardwood, hot pressed, P/F resin bonded, waterproof, flush door shutters.
- Available in surface finishes like commercial, veneered, laminated, **designed, P/F Resin coated.**



Painted Scantling Frames & Doors

Flush Doors



Moulded Panel Doors



FRP Panel Doors



nuCON's MISSION

- To impart completely integrated solutions
- To introduce technologically advanced innovative products and concepts.



Turnkey Interior Solutions
(Commercial & Industrial)

nuCON's core management team is a closely knit group of experienced professionals, who are ably supported with a second line of managers. Each member of the team, specialises in a specific domain of design and execution of projects. This core team is amply supported by a large number of experts from various domains. Thus every step of the entire project is planned and co-ordinated. The result is superior project management, service and outcomes for our clients.

SERVICES:

nuCON has a wide range of capabilities and is in a position to offer end to end, **Turnkey solutions for interiors.**

It has a variety of high quality solutions to offer in:

- False Ceilings
- Partitions
- Access Floors
- Doors, Door Frames and Windows
- Modular Furniture
- Pre Engineered Accommodations
- Safety and Sun Control Films
- Passive Fire Protection Products

Head Office

771. 4, Mayur Apartments,
Off Bhandarkar Road,
Behind Spencer's Daily, Pune 411 004.
Ph: + 91 20 2567 2590 - 91
Fax : + 91 20 2567 0838
Email : nucon@pn2.vsnl.net.in

Branch Office Nasik

3, Manoram Sahaniwasi,
Near Raj Sarathi Society,
Indira Nagar, Nasik 422 009.
Ph: +91 253 - 2322 111
Mobile: +91 94227 70913
Email: aap@nuconproducts.com

www.nuconproducts.com