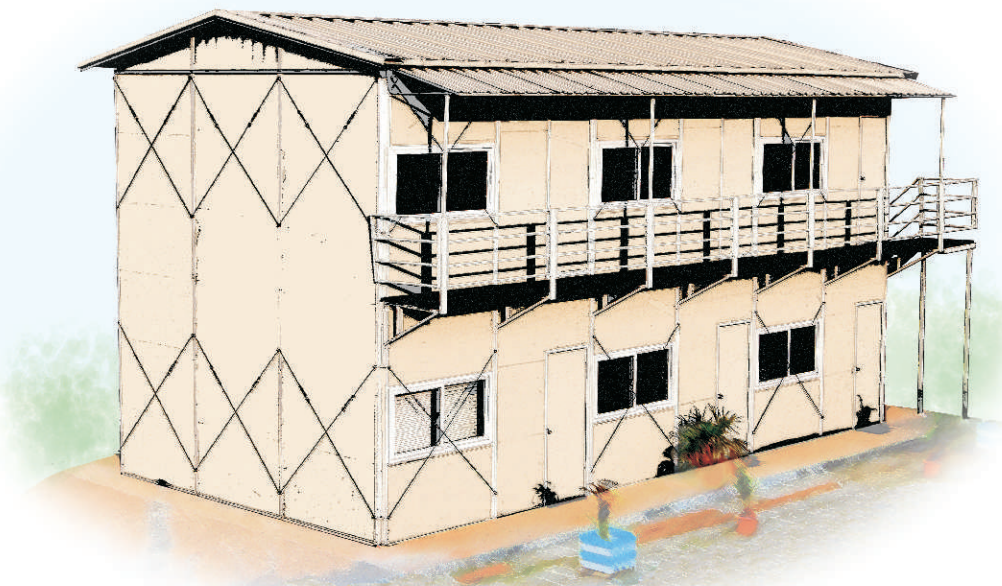




Turnkey Interior Solutions  
(Commercial & Industrial)



## PRE ENGINEERED ACCOMMODATION



L & T, ECC Ltd.,  
Shirval.



Indus Infracon,  
Pirangut.



L & T, ECC Ltd.,  
Mumbai.



Emcure Pharma. Ltd.,  
Hinjewadi.



Private Terrace House,  
Pune.

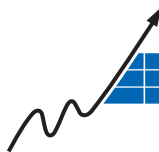


These are modular structures, with the frame being made from steel members. The roof and walls are made from insulated sandwich materials.

#### Pre Engineered accommodations are:

- Quick and Easy to install
- Can be easily shifted and reused
- Very low life cycle cost
- Comfortable and energy efficient
- Choice of materials and finishes
- Lightweight construction technology



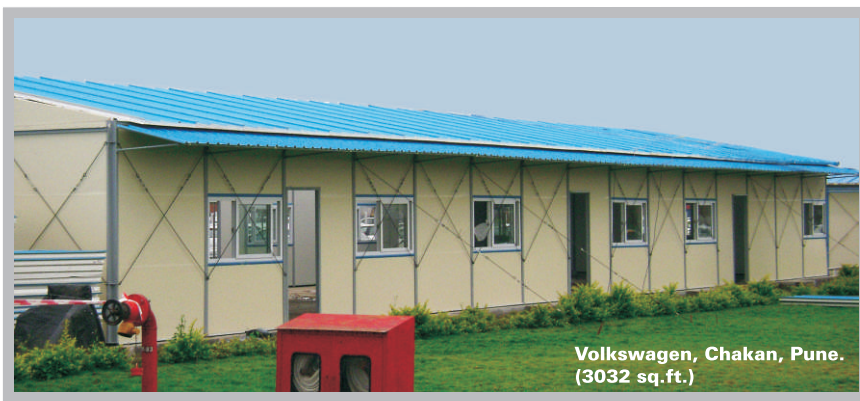


**Sigma Realty, Bhukum, Pune.**  
(1567 sq.ft.)



## Pre Engineered accommodations are suitable for:

- **Site Offices**
- **Site Accommodation**
- **Rest Houses**
- **Crèches**
- **Primary Health Centres**
- **Villas and Farm Houses**
- **Terrace Extensions**



**Volkswagen, Chakan, Pune.**  
(3032 sq.ft.)

## Options available in this type of structure:

### Approximate Covered Area for Single Storey Structure:

Length Width	3.80m	5.62m	7.44m	9.26m
3.80m	14.44 m <sup>2</sup>	21.36 m <sup>2</sup>	28.27 m <sup>2</sup>	35.19 m <sup>2</sup>
5.62m	---	31.58 m <sup>2</sup>	41.81 m <sup>2</sup>	52.04 m <sup>2</sup>
7.44m	---	---	55.35 m <sup>2</sup>	68.89 m <sup>2</sup>

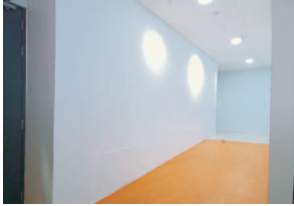
**Also Available in Ground (G), G+1 & G+2 options.**



## Other Services by nuCON



FALSE  
CEILINGS



PARTITIONS,  
DRY WALL  
CONSTRUCTION



ACCESS  
FLOORS



MODULAR FURNITURE  
&  
TURNKEY INTERIORS



FENESTRATION  
DOOR / WINDOWS /  
FRAMES

### nuCON's MISSION

- To impart completely integrated solutions
- To introduce technologically advanced innovative products and concepts.

nuCON's core management team is a closely knit group of experienced professionals, who are ably supported with a second line of managers. Each member of the team, specialises in a specific domain of design and execution of projects. This core team is amply supported by a large number of experts from various domains. Thus every step of the entire project is planned and co-ordinated. The result is superior project management, service and outcomes for our clients.

### SERVICES:

nuCON has a wide range of capabilities and is in a position to offer end to end, **Turnkey solutions for interiors.**

It has a variety of high quality solutions to offer in:

- False Ceilings
- Partitions
- Access Floors
- Doors, Door Frames and Windows
- Modular Furniture
- Pre Engineered Accommodations
- Safety and Sun Control Films
- Passive Fire Protection Products

### Head Office

771. 4, Mayur Apartments,  
Off Bhandarkar Road,  
Behind Spencer's Daily, Pune 411 004.  
Ph: + 91 20 2567 2590 - 91  
Fax : + 91 20 2567 0838  
Email: info@nuconproducts.com

### Branch Office Nasik

3, Manoram Sahaniwasi,  
Near Raj Sarathi Society,  
Indira Nagar, Nasik 422 009.  
Ph: +91 253 – 2322 111  
Mobile: +91 94227 70913  
Email: aap@nuconproducts.com



Turnkey Interior Solutions  
(Commercial & Industrial)

**www.nuconproducts.com**